

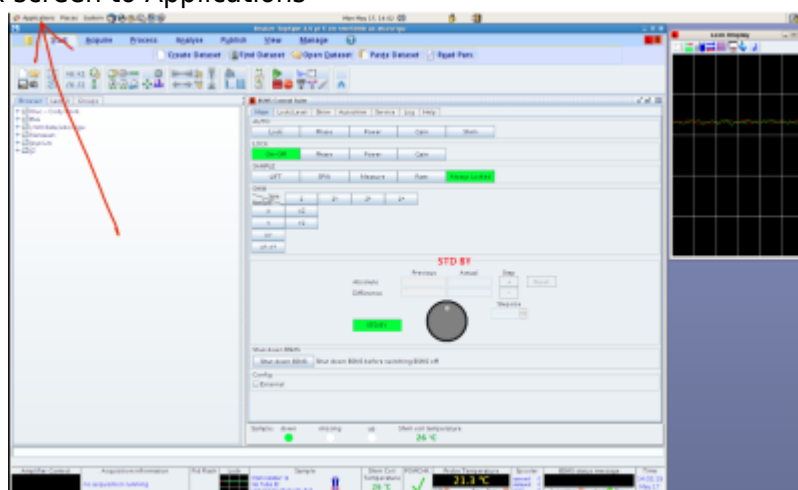
Topspin Frozen

If Topspin becomes unresponsive, an internal error has likely occurred. In this case, you'll need to force quit the application to resolve the issue.

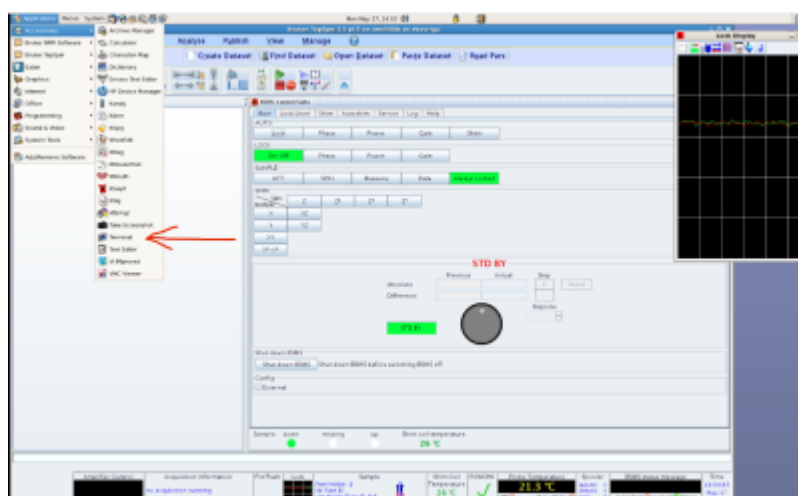
IMPORTANT: Topspin uses a Bruker license for to run. If Topspin is not exited normally, the license remains tied up to that session and you CANNOT start new Topspin to control the spectrometer. To correctly release the license, follow the procedure below.

- **Launch Terminal**

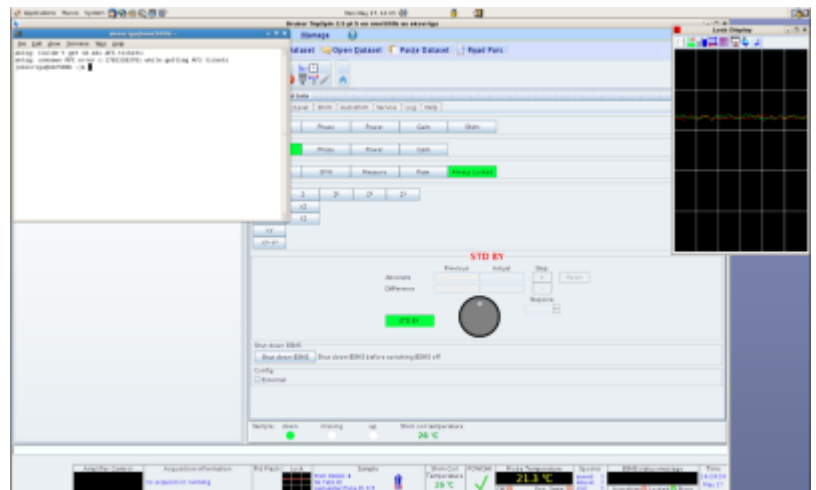
Navigate to the top menu bar of the Linux screen to Applications



- Select **Accessories : Terminal**

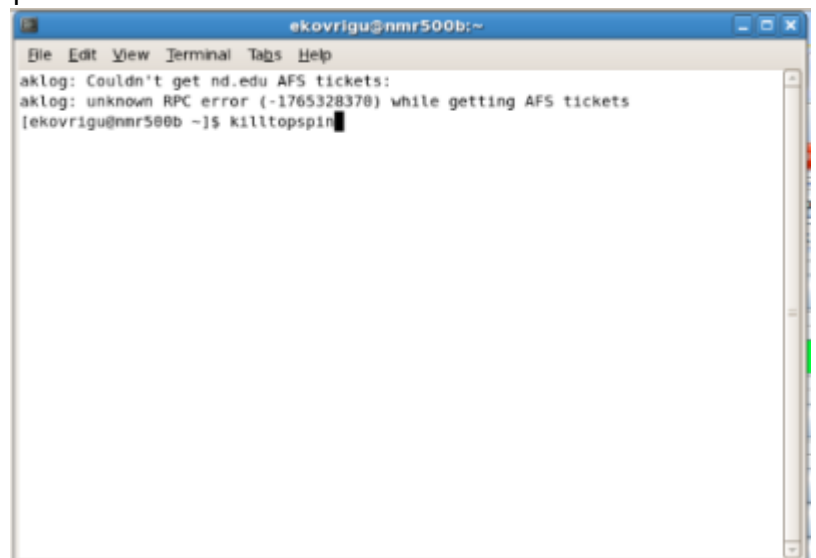


- You will see the Terminal window with a Linux command line:

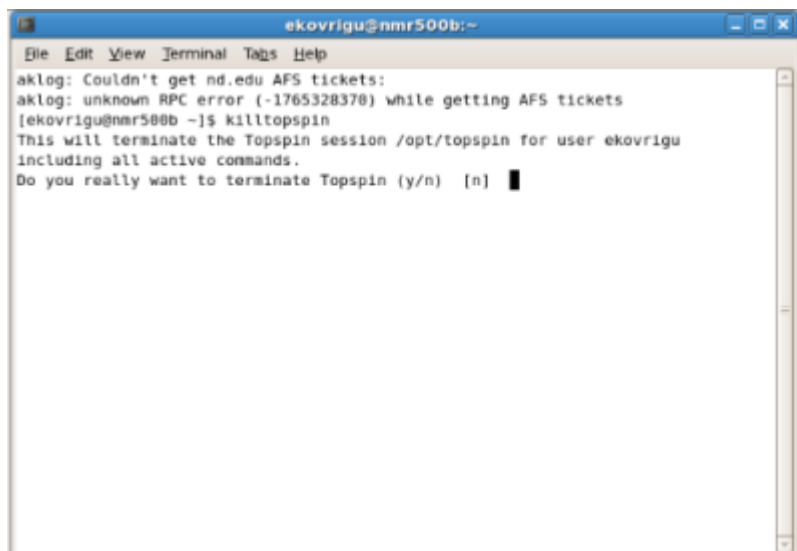


- Launch Bruker utility to remove frozen Topspin

On a Linux command line, type `killtopspin`

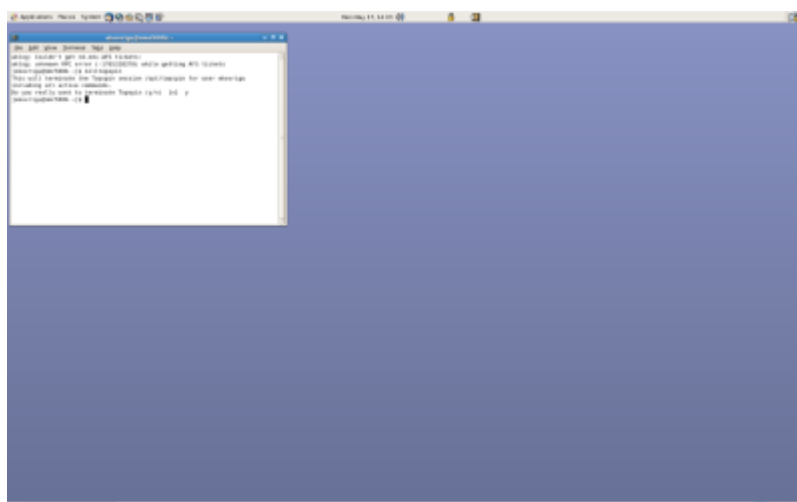


- Respond with `y` to the question:



```
ekovrigu@nmr500b:~  
File Edit View Terminal Tabs Help  
aklog: Couldn't get nd.edu AFS tickets:  
aklog: unknown RPC error (-1765328370) while getting AFS tickets  
[ekovrigu@nmr500b ~]$ killtopspin  
This will terminate the Topspin session /opt/topspin for user ekovrigu  
including all active commands.  
Do you really want to terminate Topspin (y/n) [n]
```

- This action removes frozen Topspin.

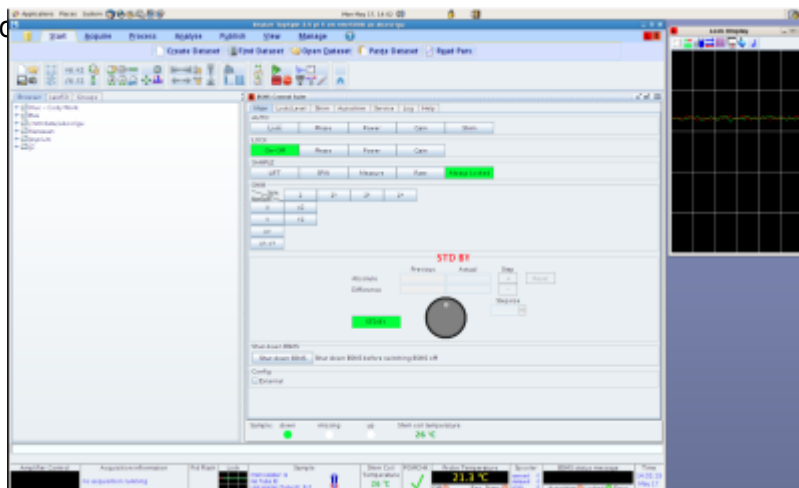


- Launch Topspin

IMPORTANT: Wait 10 seconds before you try to reopen Topspin. If you see a message box mentioning that your Topspin started as 'Datastation', this means you tried to open Topspin too soon, and the

Last
update: 2024/06/20 20:05 troubleshooting:topspin_frozen https://pydio.campus.nd.edu/docs/doku.php?id=troubleshooting:topspin_frozen&rev=1718910327

license has not been released yet. In this case



- Topspin is now fully functional

From:
<https://pydio.campus.nd.edu/docs/> - **NMR**

Permanent link:
https://pydio.campus.nd.edu/docs/doku.php?id=troubleshooting:topspin_frozen&rev=1718910327

Last update: **2024/06/20 20:05**

